

Technical specifications

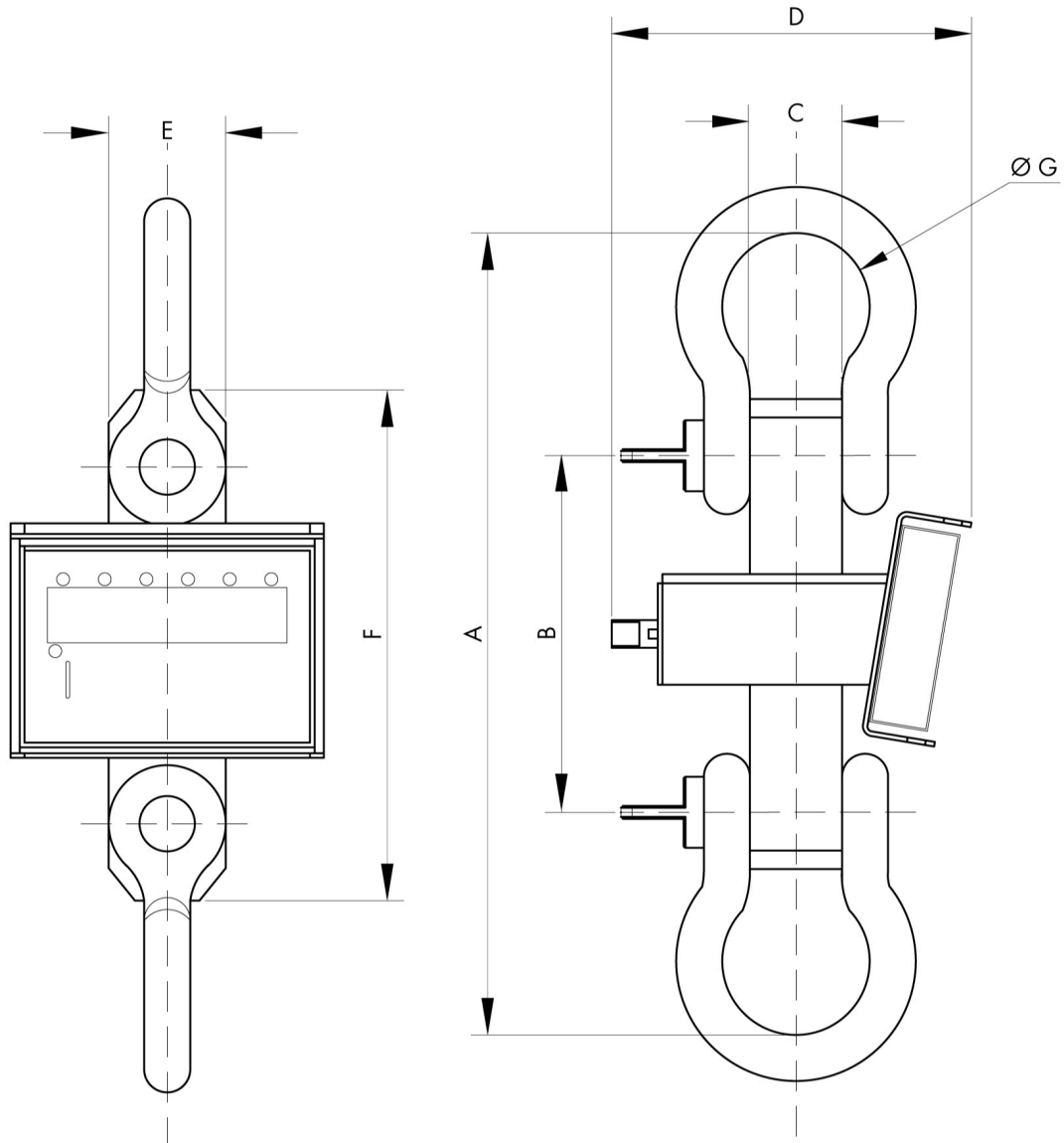
PWS9720250222

The CS09 product is an ideal dynamometer for weighing very heavy suspended loads, equipped with a weight indicator display and equipped with wi-fi technology to communicate in real time with remote devices. The CS09 weight indicator is made of stainless steel, the calibration takes place digitally and is prearranged for PC connection or with remote indicator and printer. There are different versions of CS09, which can be customized according to customer's needs.

Display:	40 mm, DOT red LED
Degree of protection:	IP67
Temperature range:	-10 ÷ +40°C
Filter:	digital and programmable
Calibration:	Programmable by keyboard or computer
Accuracy full scale:	3 t ÷ 9 t: ±0.05 % full scale; 12 t ÷ 50 t: ±0.1 % full scale
Charger:	Rechargeable battery. Charger 230 Vac 50 Hz

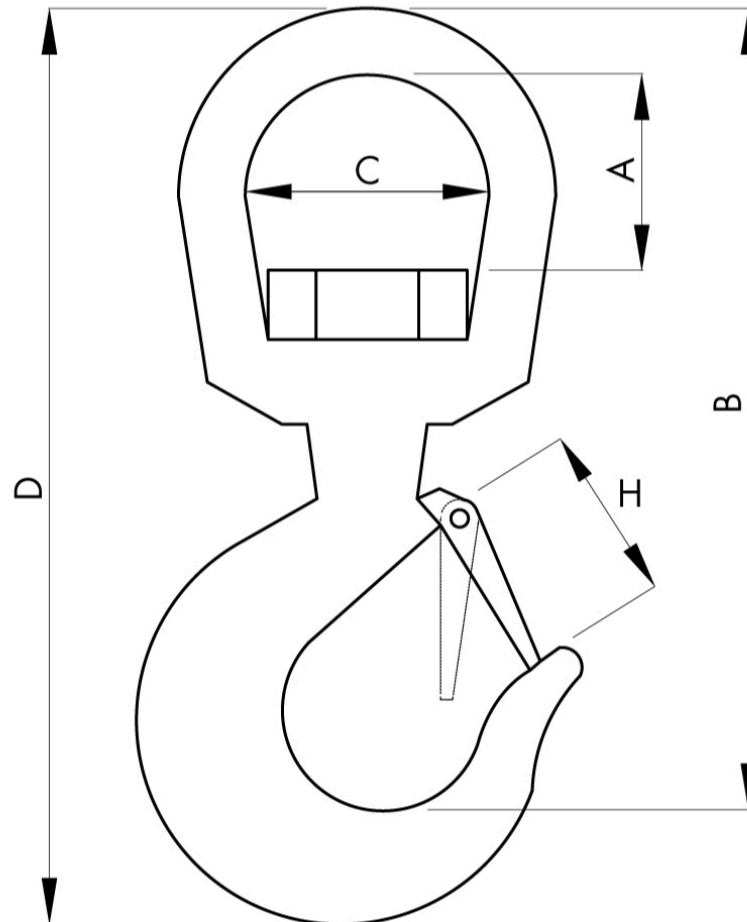


All indicated data may be changed without notice.
All the measures indicated are expressed in millimeters (mm).



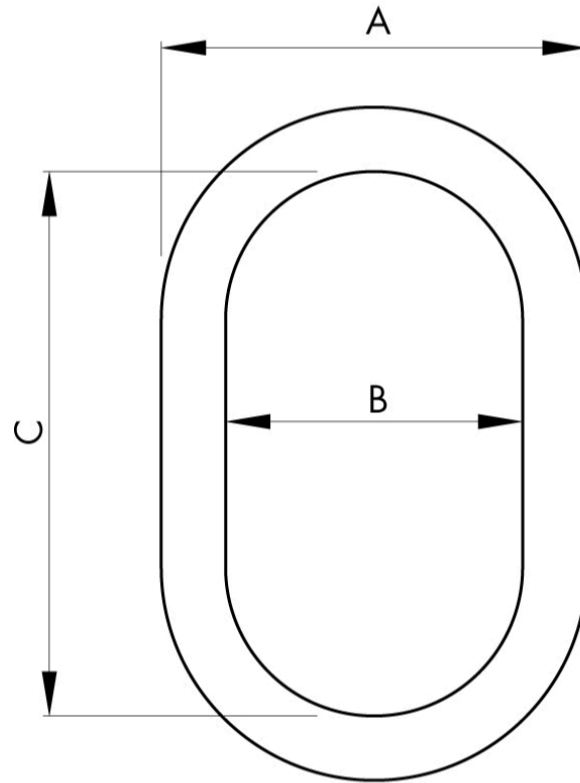
MODEL	WEIGHT	A	B	C	D	E	F	G
CS09T03	16	380	186	33	316	80	246	58
CS09T06	17	380	186	33	316	80	246	58
CS09T09	21	434	186	44	316	80	246	74
CS09T12	26	451	186	52	316	100	270	83
CS09T17	36	581	220	60	316	100	320	98
CS09T25	55	705	290	73	316	100	400	127
CS09T30	70	730	280	83	366	105	400	146
CS09T50	137	955	370	105	445	130	540	184

All indicated data may be changed without notice.
 All the measures indicated are expressed in millimeters (mm).


ACCESSORI OPZIONALI

CODE	RANGE	A	B	C	D	H
GG1T5	1,5 t	49	138,5	46	210	32
GG4	5 t	60	174	60	275	40
GG7	8 t	76	211	75	335	59
GG11	11,5 t	72	252	90	400	65
GG15	16 t	89	280	90	440	76
GG22	22 t	111	365,5	116	580	90
GG30	30 t	116	417	135	660	115

All indicated data may be changed without notice.
 All the measures indicated are expressed in millimeters (mm).


ACCESSORI OPZIONALI

CODE	RANGE	A	B	C
CA2	2 t	90	60	105
CA4	5 t	115	75	135
CA8	8 t	150	100	180
CA15	18 t	196	130	215
CA30	32 t	270	180	340
CA40	40 t	281	185	355

All indicated data may be changed without notice.
 All the measures indicated are expressed in millimeters (mm).