

## General information

PWS15920250222

The universal CVS load cell, built in stainless steel and designed for force measurements, is able to work both in traction and in compression and has excellent characteristics of linearity, precision and resistance. In fact, it withstands overloads of over 300% and has waterproof protection for use in severe environmental conditions. Furthermore, the load cell is equipped with an M8-PG7 cable gland and a 5-meter shielded cable with 6 conductors.



## Suggested related products

A highly performing weighing system must be accurate, perfectly calibrated and well maintained. In order to improve the load cell performance and to optimize its functioning, you may need the following products:

**Weight Transmitter** [UWT 6008](#)

**Weight Transmitter** [DAT 1400](#)

**Compression load cell** [CC3](#)

**Universal load cell** [CVF](#)

**Double Shear Beam Load Cell** [DDR](#)

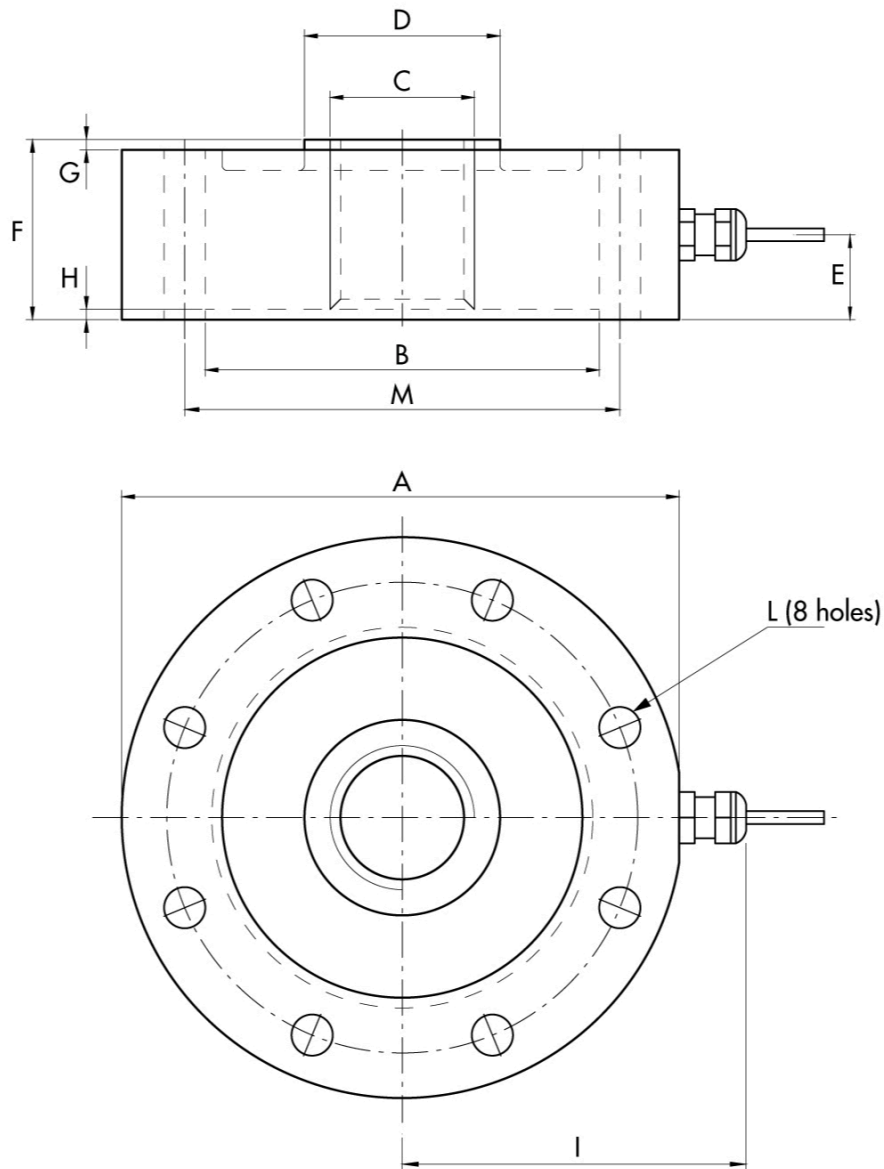
All indicated data may be changed without notice.  
All the measures indicated are expressed in millimeters (mm).

## Technical specifications

PWS15920250222

|  |  |
|--|--|
| <b>Rated load RL:</b>                      | 5, 10, 20, 30, 50, 100, 200, 300, 600, 1000 kN |
| <b>Combined error:</b>                     | ±0.08 % RO                                     |
| <b>Repeatability:</b>                      | ±0,02 % RO                                     |
| <b>Creep (20 minutes):</b>                 | ±0,02 % RO                                     |
| <b>Safe overload:</b>                      | 150 % RL                                       |
| <b>Ultimate overload:</b>                  | > 300 % RL                                     |
| <b>Material:</b>                           | Stainless steel AISI 17-4PH                    |
| <b>Degree of protection:</b>               | IP67   |
| <b>Deflection:</b>                         | 0.35 mm  |
| <b>Compensated Temperature:</b>            | -20 ÷ +70 °C                                   |
| <b>Temperature range:</b>                  | -10 ÷ +50 °C                                   |
| <b>Temperature effect on zero balance:</b> | < ±0.005 % RO/°C                               |
| <b>Temperature effect on output:</b>       | < ±0.005 % RO/°C                               |
| <b>Rated output RO:</b>                    | 2.0 mV/V ±0.1 %                                |
| <b>Zero balance:</b>                       | < ±1.5 % RO                                    |
| <b>Insulation resistance:</b>              | > 5000 MOhm                                    |
| <b>Input resistance:</b>                   | 700 ±20 Ohm                                    |
| <b>Output resistance:</b>                  | 700 ±5 Ohm                                     |
| <b>Recommended input:</b>                  | 2 ÷ 15 Vdc/ca                                  |

All indicated data may be changed without notice.  
 All the measures indicated are expressed in millimeters (mm).



| Capacity kN | ØA  | ØB   | ØC      | ØD | E    | F  | G | H   | I   | ØL   | M   |
|-------------|-----|------|---------|----|------|----|---|-----|-----|------|-----|
| 5-30        | 99  | 72.2 | M20x1.5 | 31 | 14   | 30 | 2 | 1.5 | 60  | 8.5  | 85  |
| 50-100      | 109 | 78.3 | M24x2   | 38 | 15   | 35 | 2 | 1.5 | 65  | 8.5  | 94  |
| 200-600     | 164 | 113  | M48x3   | 70 | 13.5 | 50 | 5 | 2   | 100 | 16.5 | 136 |
| 1000        | 219 | 135  | M64x4   | 88 | 19   | 70 | 5 | 3   | 120 | 26   | 175 |

| Electrical Connections |              |
|------------------------|--------------|
| +Excitation            | Red          |
| -Excitation            | Black        |
| +Sense                 | Blue         |
| -Sense                 | Brown        |
| +Signal                | Green        |
| -Signal                | White        |
| Shield                 | Cable shield |

All indicated data may be changed without notice.  
 All the measures indicated are expressed in millimeters (mm).