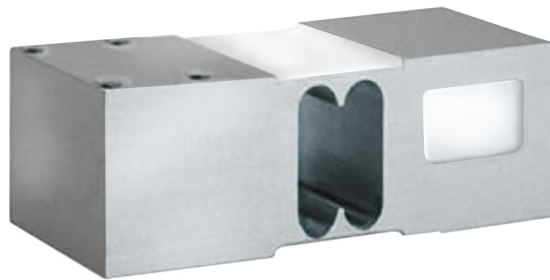


General information

PWS34120241015

The off center load cell 1260, made of aluminum, is robust and precise and ideal for large-scale single-cell platforms. This load cell maintains precision in any position the object is loaded and this solves the problems that usually occur in weighing systems if the object does not rest exactly on the center of the cell. The off center load cell 1260 has a 6 meter long shielded cable with 6 wires.



Suggested related products

A highly performing weighing system must be accurate, perfectly calibrated and well maintained. In order to improve the load cell performance and to optimize its functioning, you may need the following products:

Off Center load cell [C2G1](#)

Off Center load cell [CB004](#)

Off Center load cell [CB14](#)

Off Center load cell [U2D1](#)

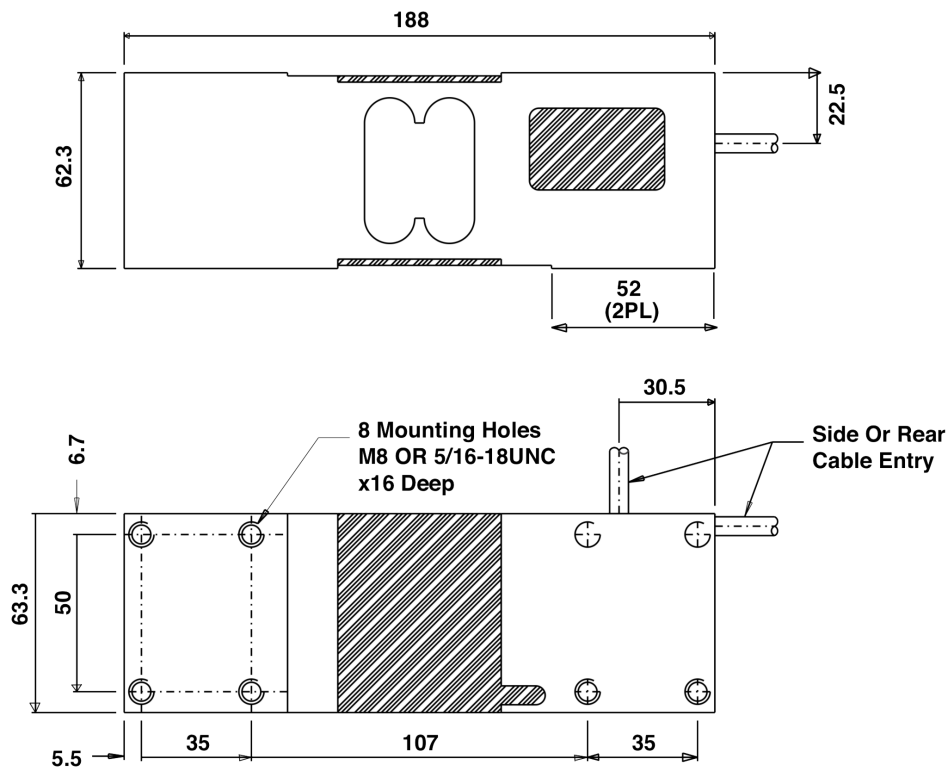
All indicated data may be changed without notice.
All the measures indicated are expressed in millimeters (mm).

Technical specifications

PWS34120241015

| | |
|--|---|
| Rated load (RL): | 50, 75, 100, 150, 250, 300, 500, 635 Kg |
| Combined error: | ±0.02 % RO |
| Repeatability: | ±0.015 % RO |
| Creep (30 minutes): | ±0.0170 % of applied load |
| Safe overload: | 150 % RL |
| Ultimate overload: | 300 % RL |
| Degree of protection: | IP66 |
| Compensated Temperature: | -10 ÷ + 40 °C |
| Temperature range: | -20°C ÷ +70°C |
| Temperature effect on zero balance: | ±0.0023 % RO/°C |
| Temperature effect on output: | ±0.0010 % of applied load/°C |
| Rated output RO: | 2.0 mV/V |
| Zero balance: | ±0.2 mV/V |
| Insulation resistance: | >2000 MOhm |
| Input resistance: | 415 ±15 Ohm |
| Cable Length: | 3m |
| Maximum platform size (mm): | 600 x 600 |
| Maximum excitation: | 15 Vdc/ac RMS |
| Excitation recommended: | 10 Vdc/ac RMS |
| Output impedance: | 350 ±3 Ohm |

All indicated data may be changed without notice.
All the measures indicated are expressed in millimeters (mm).


Wiring Schematic Diagram
BALANCED TEMPERATURE COMPENSATION

| | |
|------------|-------|
| +VE INPUT | Green |
| +VE SENSE | Blue |
| +VE OUTPUT | Red |
| -INPUT | Black |
| -VE SENSE | Brown |
| -OUTPUT | White |

All indicated data may be changed without notice.
 All the measures indicated are expressed in millimeters (mm).