

## General information

PWS5020241015

The P SPRX pin load cell is made of stainless steel and offers maximum resistance to impacts and overloads. The operation of the P SPRX load cell is double-ended shear beam. The P SPRX cell is insensitive to side loads and it has been designed for shooting, weighing or anti-overhead systems for overhead cranes. The P SPRX pin load cell can be customized and it has a "high temperature" version.



## Suggested related products

A highly performing weighing system must be accurate, perfectly calibrated and well maintained. In order to improve the load cell performance and to optimize its functioning, you may need the following products:

**Weight Transmitter** [DAT 1400](#)

**Weight Indicator** [MCT 1302](#)

**Tester 1008** [TESTER 1008](#)

**Junction Box** [CGS4-C](#)

**Electronic Overload Guard** [LC 200](#)

**Electronic Overload Guard** [LC 300](#)

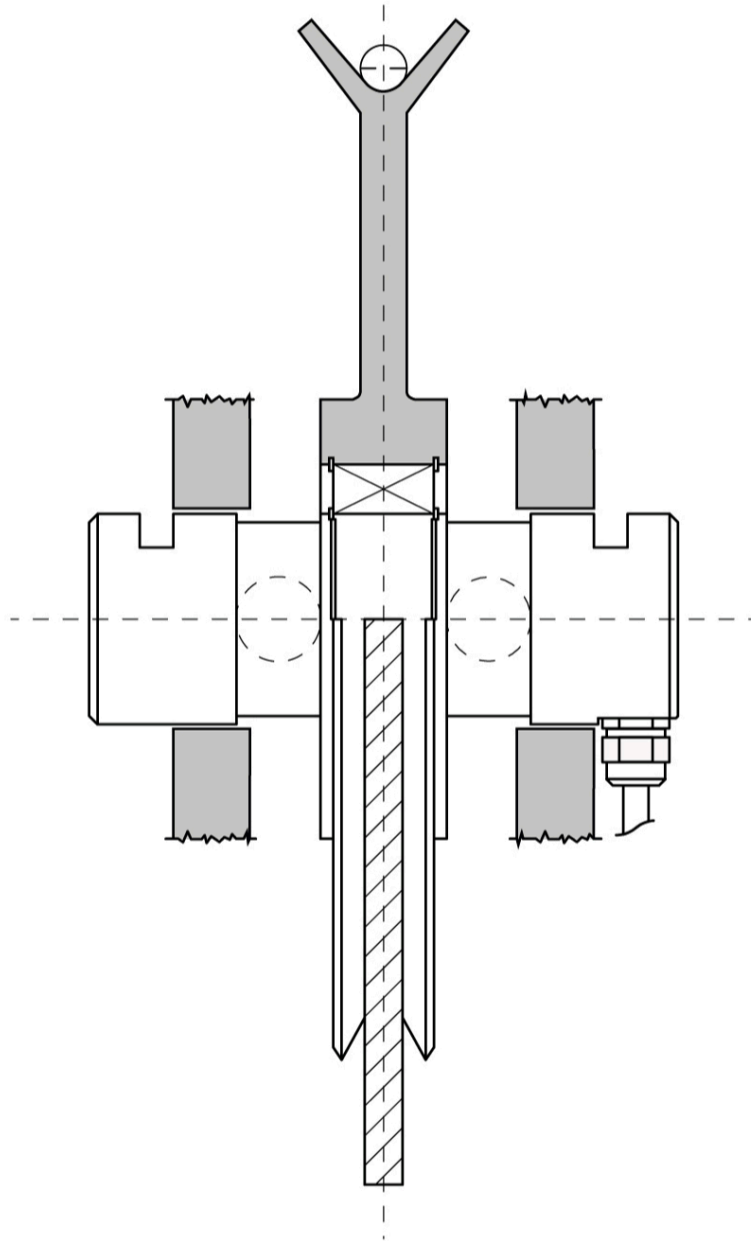
All indicated data may be changed without notice.  
All the measures indicated are expressed in millimeters (mm).

## Technical specifications

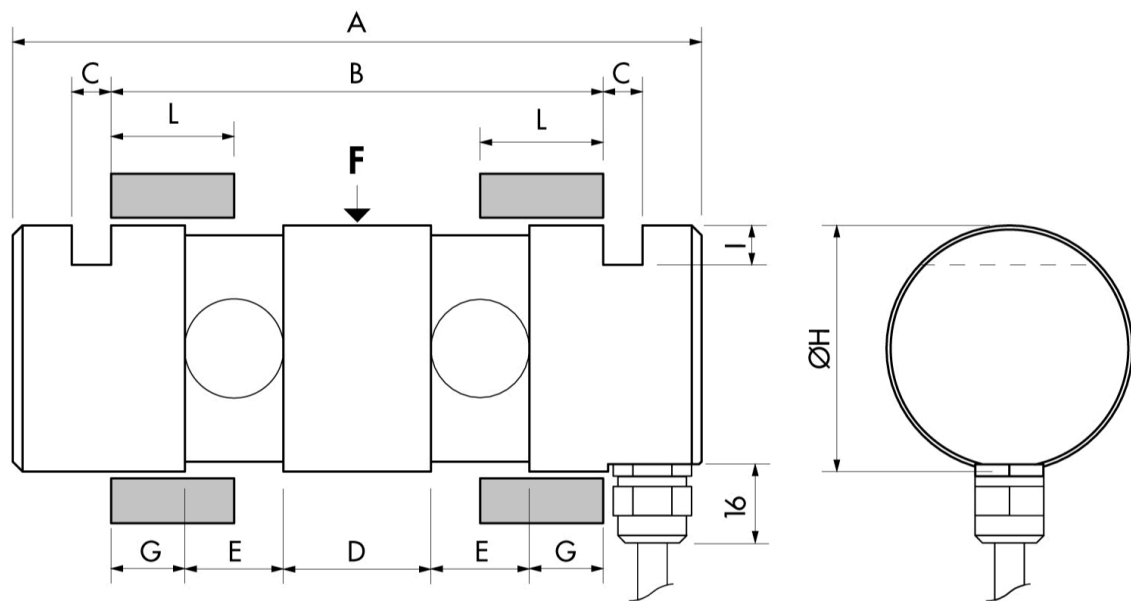
PWS5020241015

<b>Rated load (RL):</b>	PRN 500 ÷ 4000 kg; PRX 5000 ÷ 100.000 kg
<b>Combined error:</b>	< ±0.1 % RO
<b>Repeatability:</b>	< ±0.02 % RO
<b>Creep (20 minutes):</b>	±0.03 % RO
<b>Safe overload:</b>	150 % RL
<b>Ultimate overload:</b>	300 % RL
<b>Material:</b>	Stainless steel
<b>Degree of protection:</b>	IP65
<b>Deflection:</b>	0.4 mm
<b>Compensated Temperature:</b>	-10 ÷ +50°C
<b>Temperature range:</b>	-20 ÷ +70°C
<b>Temperature effect on zero balance:</b>	< ±0.005 % RO/°C
<b>Temperature effect on output:</b>	< ±0.005 % RO/°C
<b>Rated output RO:</b>	1 mV/V ±0.1 %
<b>Zero balance:</b>	< ±2 % RO
<b>Insulation resistance:</b>	> 5000 MOhm
<b>Input resistance:</b>	700 ±20 Ohm
<b>Output resistance:</b>	700 ±10 Ohm
<b>Recommended input:</b>	5 ÷ 15 Vdc/ac

All indicated data may be changed without notice.  
 All the measures indicated are expressed in millimeters (mm).



All indicated data may be changed without notice.  
All the measures indicated are expressed in millimeters (mm).



MODEL	RATED LOAD (KG)	A	B	C	D	E	G	ØH	I
PRX (ex PRN)	500 - 4.000	116	80	6	20	20	10	30	6
PRX	5.000 - 20.000	140	100	8	30	20	15	50	8
PRX	30.000 - 60.000	290	220	20	100	30	30	80	15
PRX	80.000 - 100.000	305	235	20	115	30	30	100	15

All indicated data may be changed without notice.  
 All the measures indicated are expressed in millimeters (mm).