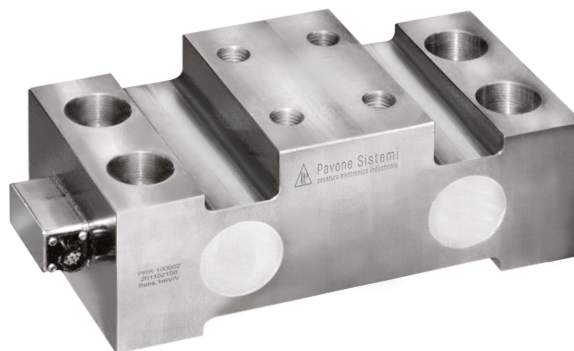


Technical specifications

PWS13520240630

The PRR HT product, built in stainless steel, is a load cell for high temperatures. It is equipped with watertight protection for use in severe environmental conditions and can be customized on request. It has a low profile and it is suitable for hostile environments. The PRR HT cell has excellent linearity and precision characteristics, it is insensitive to side loads and withstands overloads of up to 500%. The PRR HT load cell is widely used in the iron and steel sector.

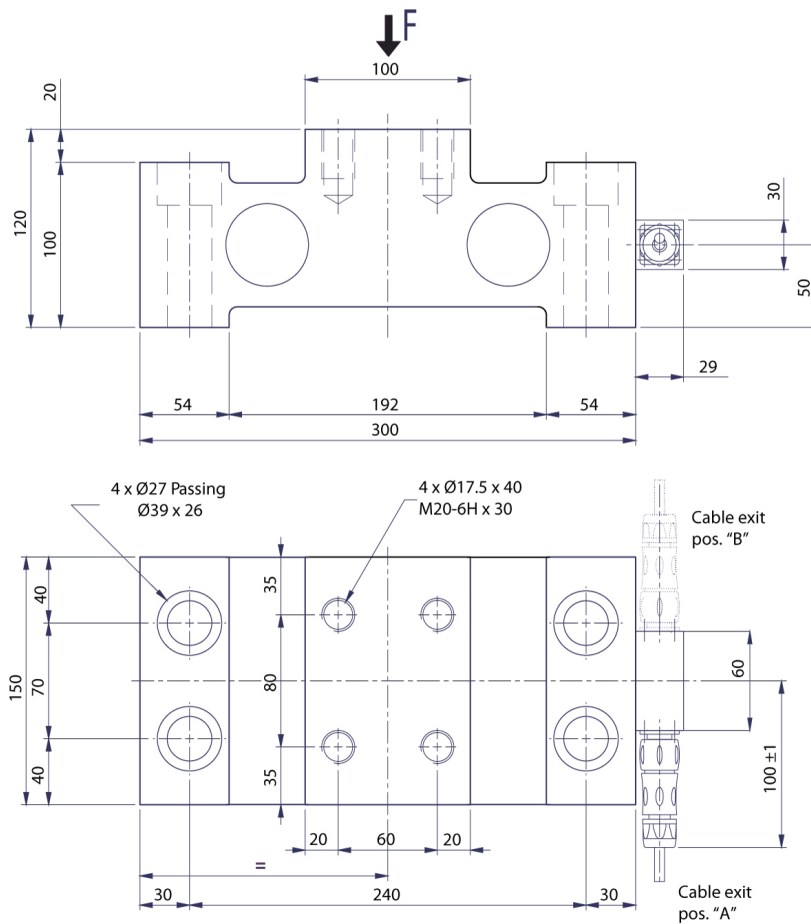
Rated Load (RL):	50, 100 t
Combined error:	±0.15 % RO
Repeatability:	±0.02 % RO
Creep (20 minutes):	±0.03 % RL
Safe overload:	200 % RL
Ultimate overload:	500 % DN
Ultimate sideload:	100 % RL
Material:	Stainless steel AISI 17-4PH
Degree of protection:	IP66
Deflection:	0.35 mm
Compensated Temperature:	-10 ÷ +120 °C
Temperature range:	-20 ÷ +150 °C
Temperature effect on zero balance:	< ±0.005 % RO/°C
Temperature effect on output:	< ±0.005 % on output/°C
Rated output RO:	1.0 mV/V ±0.1 %
Zero balance:	< ±1.5 % RO
Insulation resistance:	> 5000 MOhm
Input resistance:	350 ±20 Ohm
Output resistance:	350 ±5 Ohm
Recommended input:	2 ÷ 15 V



All indicated data may be changed without notice.
All the measures indicated are expressed in millimeters (mm).

PAVONE SISTEMI S.R.L.

Via Tiberio Bianchi 11/13/15, 20863 Concorezzo (MB), Milan, Italy
T (+39) 039 9162656 F (+39) 039 9162675 W pavonesistemi.com
Industrial Electronic Weighing Systems since 1963



All indicated data may be changed without notice.
 All the measures indicated are expressed in millimeters (mm).