

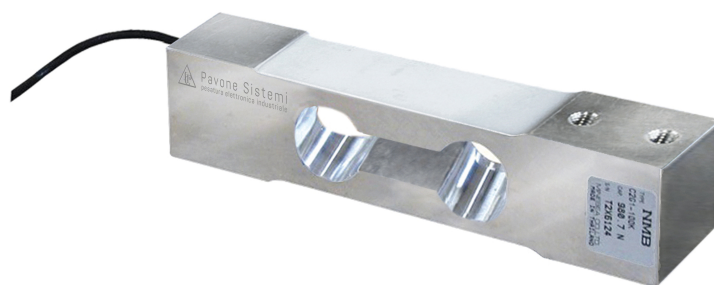


# Technical specifications

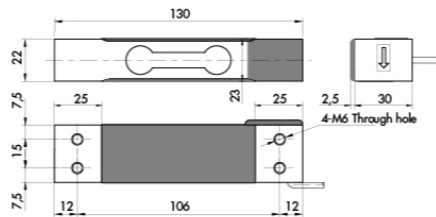
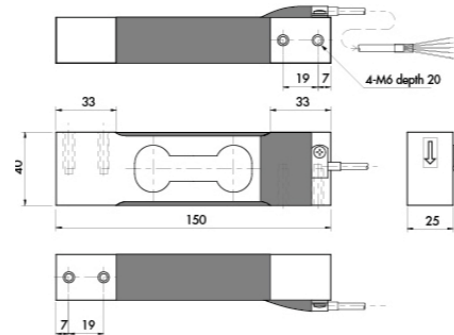
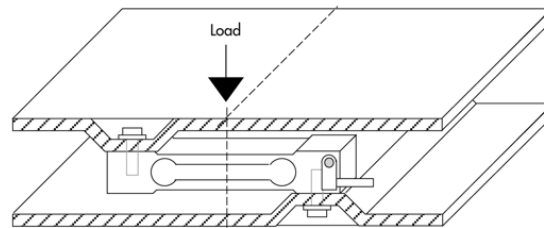
PWS12820250314

The C2G1 HT load cell is suitable for high temperatures and it is particularly suitable for the construction of industrial and bench scales, piece counters and packaging machines. The C2G1 HT cell also measures correctly with off-center loads while maintaining high accuracy and reliability.

<b>Rated load (RL):</b>	6, 10, 12, 15, 20, 25, 30, 35, 50, 60, 100 Kg
<b>Repeatability:</b>	±0,02 % RO
<b>Creep (20 minutes):</b>	±0,02 % RO
<b>Full scale non-Linearity:</b>	±0,015 % RO
<b>Safe overload:</b>	150 % RL
<b>Ultimate overload:</b>	200 % RL
<b>Material:</b>	Stainless steel
<b>Degree of protection:</b>	IP64
<b>Accuracy class:</b>	3000 OIML - 6000 OIML
<b>Deflection:</b>	0.17 ÷ 0.62 mm
<b>Compensated Temperature:</b>	-10 ÷ +120 °C
<b>Temperature range:</b>	-10 ÷ +150 °C
<b>Temperature effect on zero balance:</b>	±0.004 % RO/°C
<b>Temperature effect on output:</b>	±0.0012 % load/°C
<b>Rated output RO:</b>	2 mV/V ±0.2
<b>Zero balance:</b>	< ±0.1 mV/V
<b>Insulation resistance:</b>	> 2000 MOhm
<b>Input resistance:</b>	420 ± +30/-20 Ohm
<b>Output resistance:</b>	350 ±5 Ohm
<b>Recommended input:</b>	5 ÷ 12 Vdc/ac



All indicated data may be changed without notice.  
All the measures indicated are expressed in millimeters (mm).

**Capacity 6 ÷ 50 Kg**

**Capacity 60 ÷ 100 Kg**

**Mounting Example**

**TO KNOW –**

Error is within 0.02% of Rated Output applied with 1/2 of capacity at the position of 75mm of eccentricity. The center of loading plate and the center of the load cell should be the same position.

**Electrical Connection**

+ Excitation = RED	+ Signal = GREEN	+ Sense = BLUE
- Excitation = BLACK	- Signal = WHITE	- Sense = BROWN

All indicated data may be changed without notice.  
All the measures indicated are expressed in millimeters (mm).