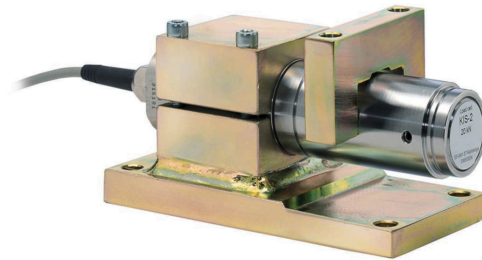


General information

PWS2020240630

The BLH NOBEL KIS 2 load cell is extremely precise and robust and it is resistant to very high lateral forces. The KIS 2 cell is easy to install, it has a moveable loading point and 5 meter 4-wire shielded cable. The BH NOBEL KIS 2 load cell can be used for weighing for dosing, mixing and melting systems, for weighing for reactors and conveyor belts, for complex weighing processes and for accurate force misalignment systems.



Suggested related products

A highly performing weighing system must be accurate, perfectly calibrated and well maintained. In order to improve the load cell performance and to optimize its functioning, you may need the following products:

Weight Transmitter [UWT 6008](#)

Weight Transmitter [DAT 1400](#)

Weight Indicator [MCT 1302](#)

Tester 1008 [TESTER 1008](#)

Junction Box [CGS4-C](#)

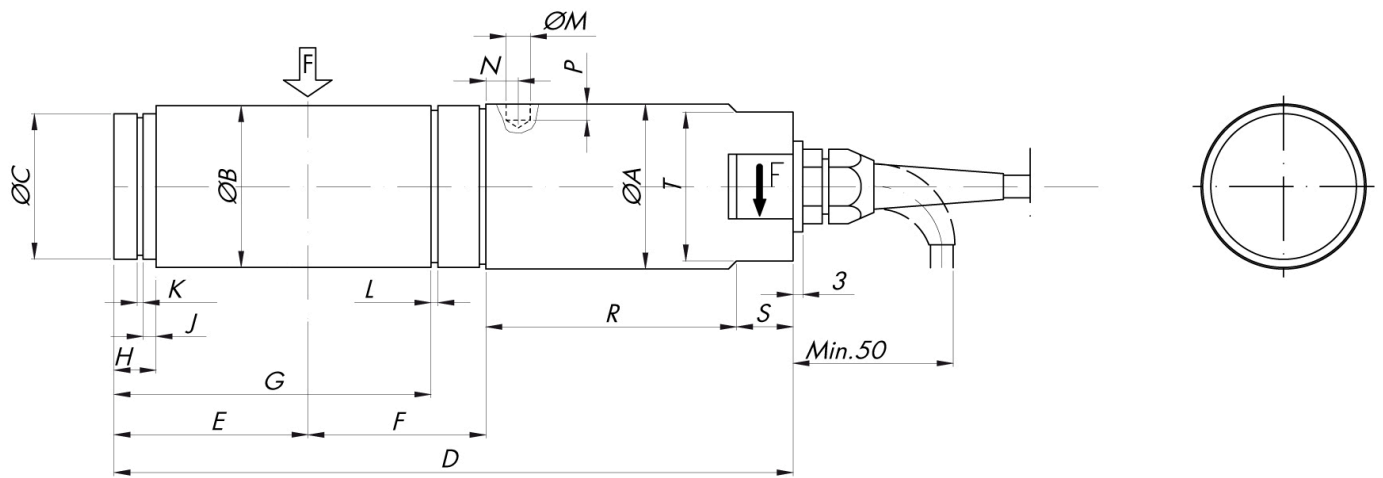
All indicated data may be changed without notice.
All the measures indicated are expressed in millimeters (mm).

Technical specifications

PWS2020240630

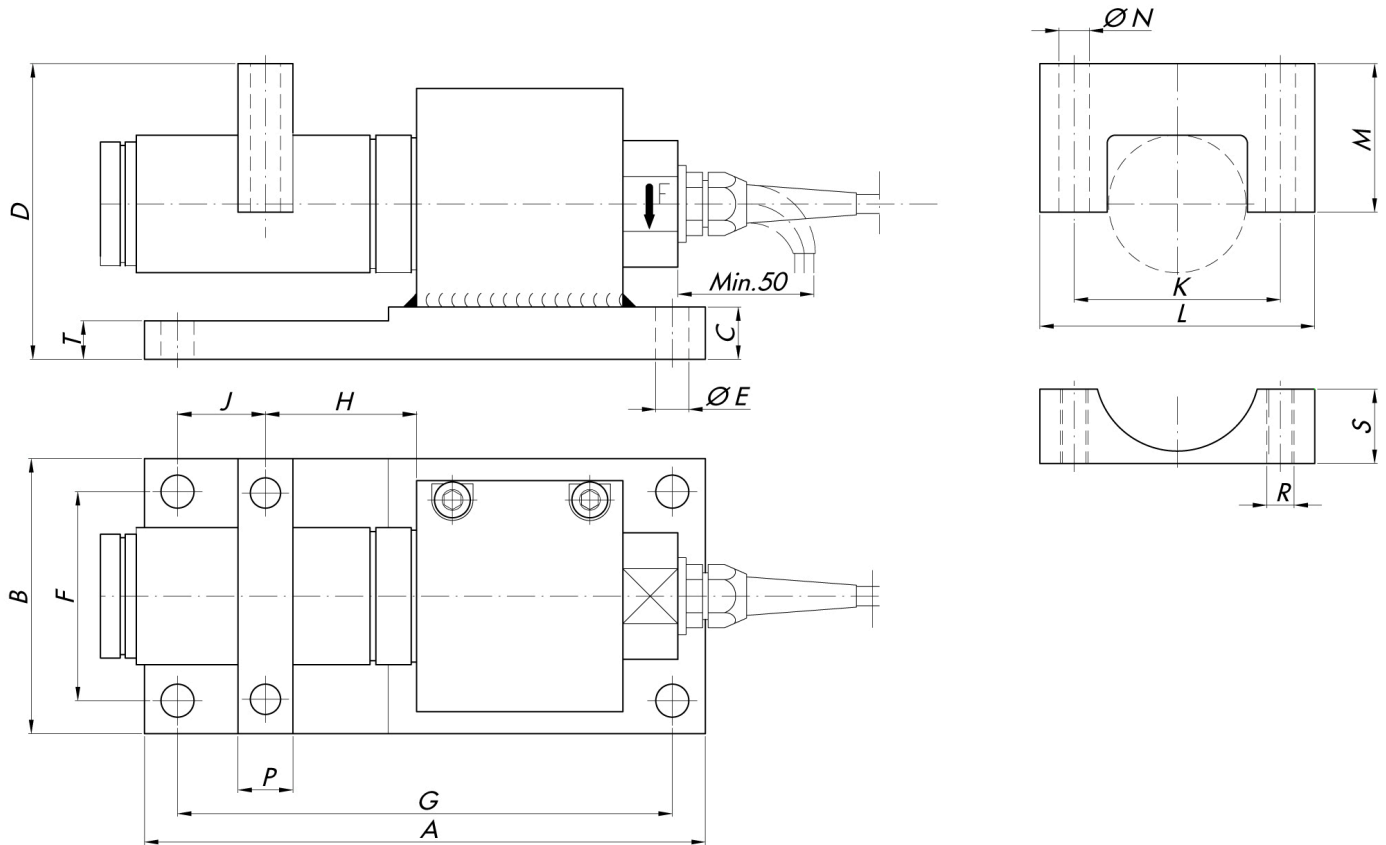
Rated load RL:	1, 2, 5, 10, 20, 30 kN
Combined error:	±0.05 % RO
Repeatability:	±0.01 % RO
Creep (30 minutes):	±0.03 % RL
Safe overload:	200, 150 for 30 kN % PN
Ultimate overload:	300 % (200% x 30 kN)
Safe sideload:	100% (50% x capacity=30kN)
Ultimate sideload:	200 % RL
Material:	Rostfreier Stahl
Degree of protection:	IP67
Temperature range:	-40 ÷ +100 °C optional
Temperature effect on zero balance:	±0.0014 % RO/°C
Temperature effect on output:	±0.0033 % output/°C
Rated output RO:	2.040 mV/V ±0.25 %
Zero balance:	±5 % RO
Insulation resistance:	> 4 G Ohm
Input resistance:	350 ±3 Ohm
Output resistance:	350 ±3 Ohm
Recommended input:	5 Vdc/ac
Maximum supply voltage:	18 Vdc/ca
Material (accessories):	Yellow chromate steel or stainless steel
Ultimate uplift (% of capacity):	120 % RL
Safe uplift:	100 % RL

All indicated data may be changed without notice.
 All the measures indicated are expressed in millimeters (mm).



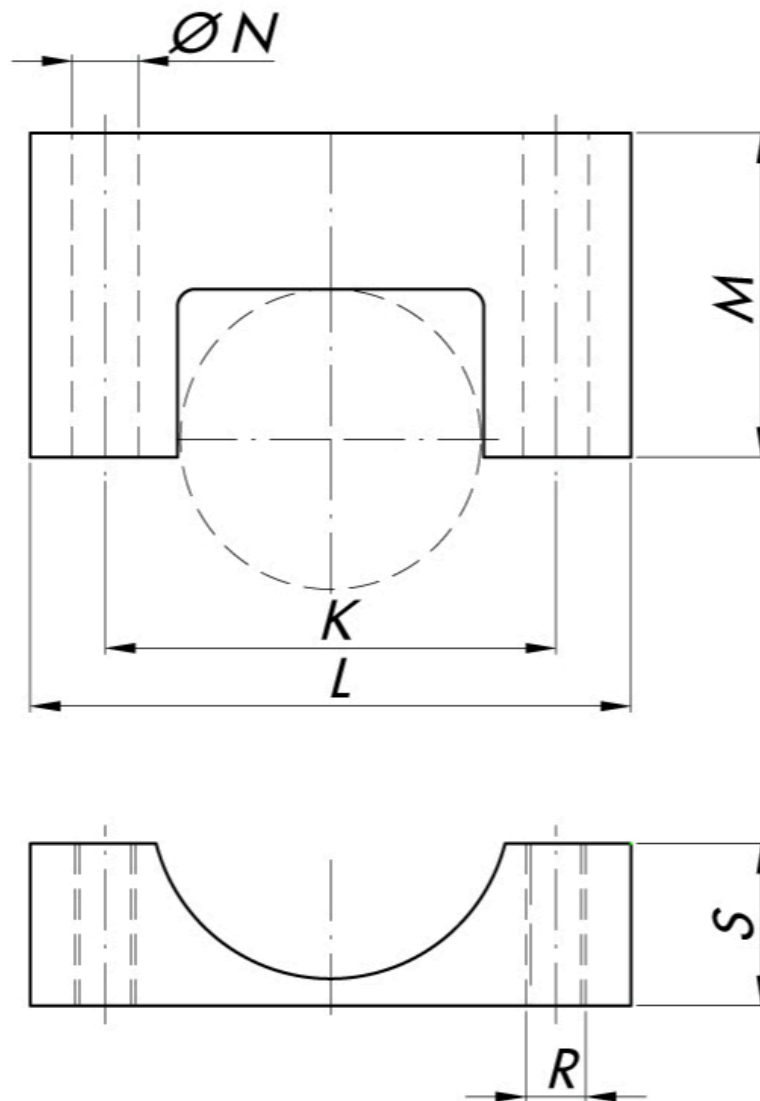
RANGE kN	ØA	ØB	ØC	D	E	F	G	H	J	K	L	ØM	N	P	R	S	T
1-2.5	34	33	29	169	46	35	-	10	2.5	1.6	-	4.4	10	2.3	70	15	30
10-20-30	51	50	45	213	60	55	97.85	13	4	1.85	2.15	7.5	12	5	75	20	46

All indicated data may be changed without notice.
 All the measures indicated are expressed in millimeters (mm).



RANGE kN	A	B	C	D	E	F	G	H	J	K	L	M	N	P	R	S	T
1-2-5	175	75	14	81	12	51	151	35	31	55	70	41	8.5	20	M8	19	14
10-20-30	204	100	19	107.5	12	76	180	55	32	75	100	54	11	20	M10	27	14

All indicated data may be changed without notice.
 All the measures indicated are expressed in millimeters (mm).


TEFLON LINED YOKE

RANGE kN	K	L	M	N	R	S	T
1-2-5	55	75	50	8.5	M8	14.5	25
10-20-30	100	125	63	13	M12	24	33

All indicated data may be changed without notice.
 All the measures indicated are expressed in millimeters (mm).