

General information

PWS2420241015

The BLH NOBEL KIS-11 load cell is extremely precise and robust, it withstands very high lateral forces and it is easy to install. The KIS 11 cell has a movable loading point and a 10 meter 4-wire shielded cable. The KIS-11 load cell is used in batching, mixing and melting systems, in complex weighing processes, in reactor weighing and in force measurement systems. The load cell BLH NOBEL KIS-11 is also available for extreme temperature from - 40 to + 100 °C.



Suggested related products

A highly performing weighing system must be accurate, perfectly calibrated and well maintained. In order to improve the load cell performance and to optimize its functioning, you may need the following products:

Weight Transmitter [UWT 6008](#)

Weight Transmitter [DAT 1400](#)

Weight Indicator [MCT 1302](#)

Tester 1008 [TESTER 1008](#)

Junction Box [CGS4-C](#)

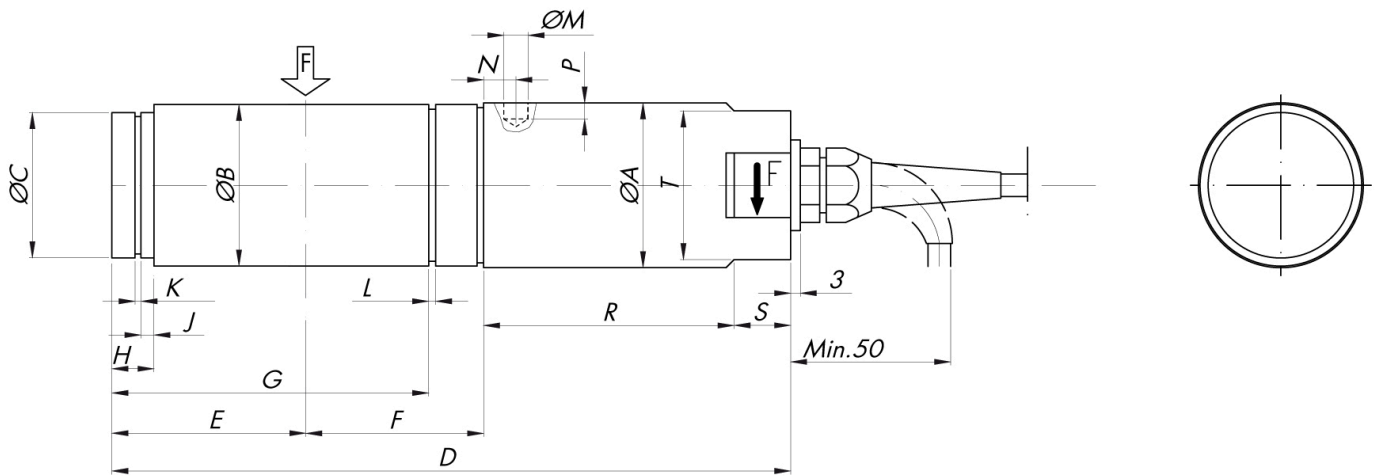
All indicated data may be changed without notice.
All the measures indicated are expressed in millimeters (mm).

Technical specifications

PWS2420241015

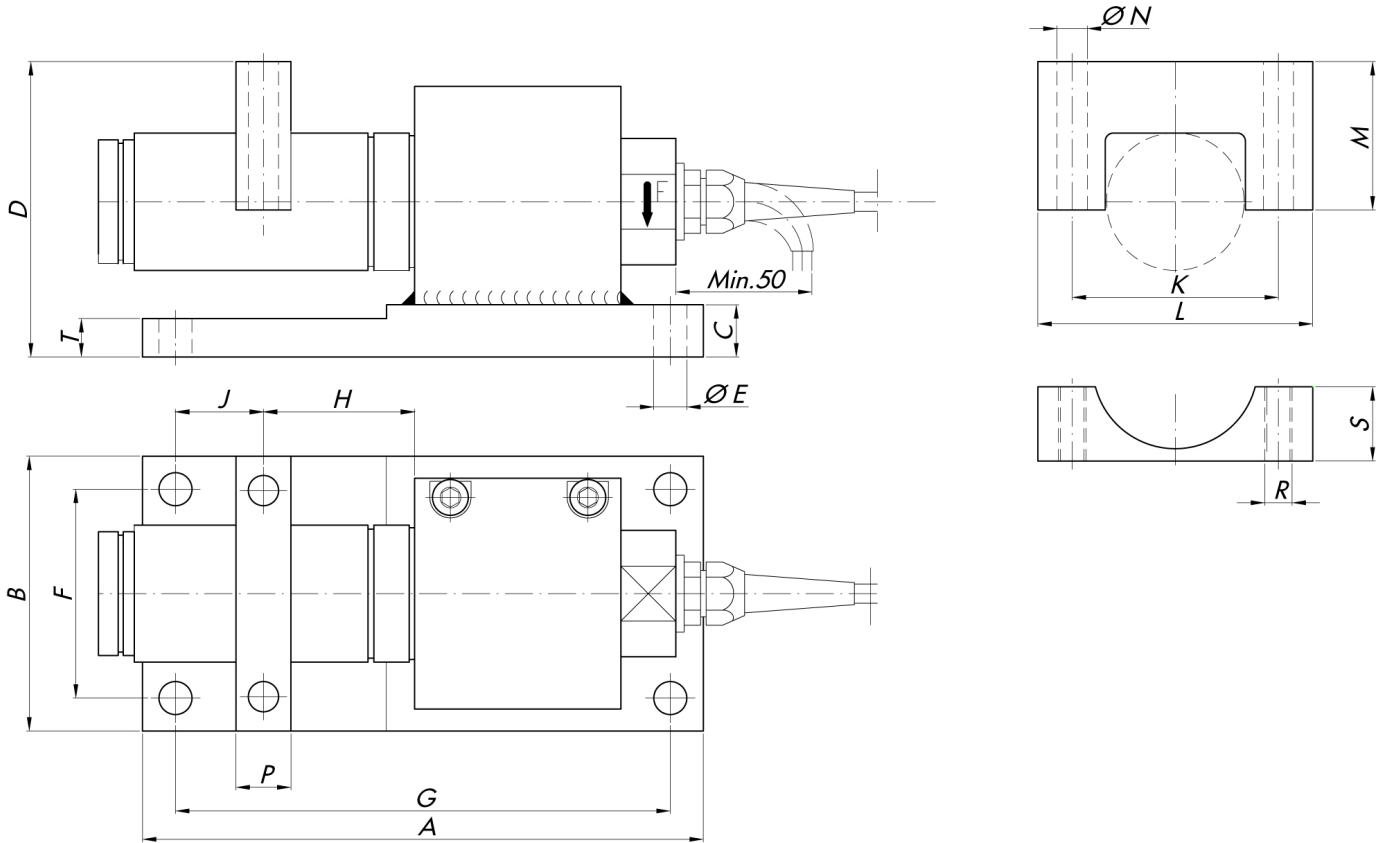
| | |
|--|------------------------------|
| Rated load RL: | 50 kN |
| Combined error: | ±0.02 % RO |
| Repeatability: | 0.01 % RO |
| Creep (30 minutes): | ±0.04 % RL |
| Safe overload: | 100 % RL |
| Ultimate overload: | 200 % RL |
| Safe sideload: | 100 % RL |
| Ultimate sideload: | 200 % RL |
| Material: | Stainless steel |
| Degree of protection: | IP67 |
| Temperature range: | -40 ÷ +80 (+100 optional) °C |
| Temperature effect on zero balance: | ±0.0014 % RO/°C |
| Temperature effect on output: | ±0.0010 % on output/°C |
| Rated output RO: | 1.020 mV/V ±0.1 % |
| Zero balance: | ±1 % RO |
| Insulation resistance: | > 4 G Ohm |
| Input resistance: | 350 ±3 Ohm |
| Output resistance: | 350 ±0.5 Ohm |
| Recommended input: | 5 Vdc/ac |
| Maximum supply voltage: | 18 Vdc/ca |
| Material (accessories): | Yellow chromate steel |

All indicated data may be changed without notice.
 All the measures indicated are expressed in millimeters (mm).



| RANGE kN | ØA | ØB | ØC | D | E | F | G | H | J | K | L | ØM | N | P | R | S | T |
|----------|-----|-----|----|-----|-----|----|-------|----|---|------|------|------|----|-----|-----|----|----|
| 50 | 77 | 75 | 70 | 291 | 93 | 65 | 141.3 | 12 | 5 | 2.65 | 2.65 | 9.1 | 14 | 7 | 110 | 20 | 60 |
| 100 | 92 | 90 | 82 | 315 | 107 | 65 | 155.4 | 15 | 6 | 2.65 | 3.15 | 12.6 | 17 | 8 | 120 | 20 | 70 |
| 125 | 92 | 90 | 82 | 315 | 107 | 65 | 155.4 | 15 | 6 | 2.65 | 3.15 | 12.6 | 17 | 8 | 120 | 20 | 70 |
| 200 | 101 | 100 | 90 | 346 | 128 | 65 | 175.8 | 15 | 6 | 3.15 | 3.15 | 15.7 | 19 | 8.5 | 130 | 20 | 80 |

All indicated data may be changed without notice.
 All the measures indicated are expressed in millimeters (mm).



| RANGE kN | A | B | C | D | ØE | F | G | H | J | K | L | M | ØN | P | T | R | S |
|----------|-----|-----|----|-----|----|-----|-----|----|------|-----|-----|----|----|----|----|-----|----|
| 50 | 280 | 150 | 30 | 152 | 16 | 115 | 245 | 65 | 45.5 | 115 | 150 | 72 | 18 | 30 | 30 | M16 | 43 |
| 100 | 310 | 170 | 40 | 173 | 22 | 130 | 270 | 65 | 63 | 126 | 160 | 85 | 22 | 40 | 26 | M20 | 50 |
| 125 | 310 | 170 | 40 | 173 | 22 | 130 | 270 | 65 | 63 | 126 | 160 | 85 | 22 | 40 | 26 | M20 | 50 |
| 200 | 340 | 180 | 50 | 199 | 25 | 140 | 300 | 65 | 71 | 146 | 190 | 95 | 25 | 50 | 32 | M24 | 56 |

| RANGE kN | K | L | M | ØN | R | S | P |
|----------|-----|-----|------|----|-----|----|----|
| 50 | 125 | 160 | 84.5 | 18 | M16 | 33 | 30 |
| 100 | 150 | 190 | 92.5 | 22 | M20 | 46 | 40 |
| 125 | 150 | 190 | 92.5 | 22 | M20 | 46 | 40 |
| 200 | 175 | 220 | 105 | 26 | M24 | 56 | 53 |

All indicated data may be changed without notice.
 All the measures indicated are expressed in millimeters (mm).

* Teflon lined yoke